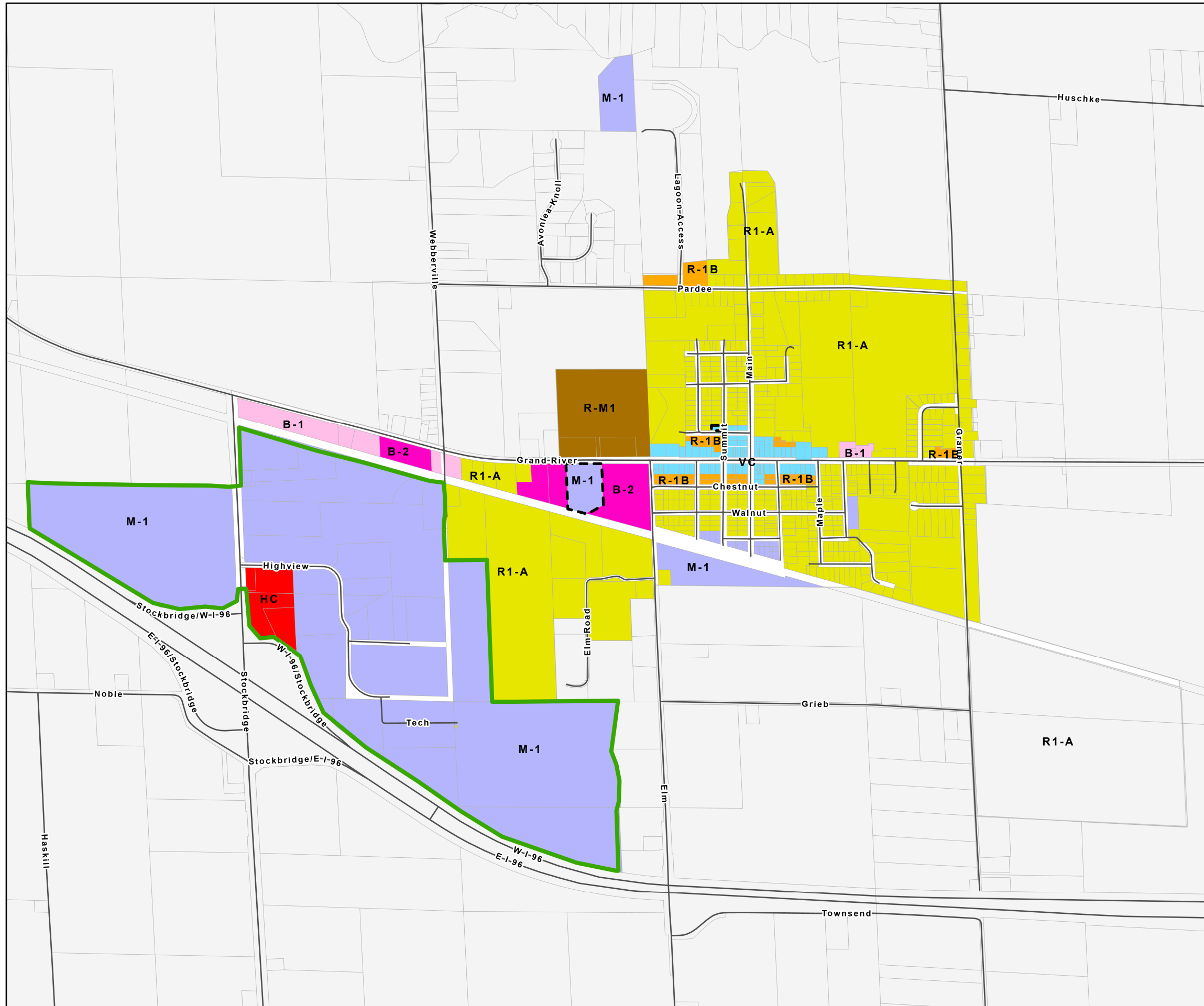


# DRAFT Zoning Map

Village of Webberville, Ingham County, MI

DRAFT July 17, 2025



## LEGEND

Subject to Conditional Rezoning Agreement

- Zoning
- R-1A Low Density Residential
  - R-1B Medium Density
  - R-M1 Multiple-Family Residential
  - VC Village Core Mixed Use
  - B-1 Local Business
  - B-2 General Business
  - HC Highway Commercial
  - M-1 Limited Industrial
  - Marijuana Business Boundary



Basemap Source: Michigan Center for Geographic Information, Version 17a.  
Data Source: Village of Webberville 2022. McKenna 2022.